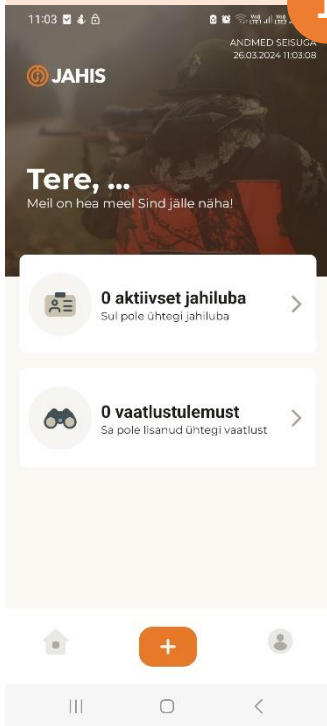
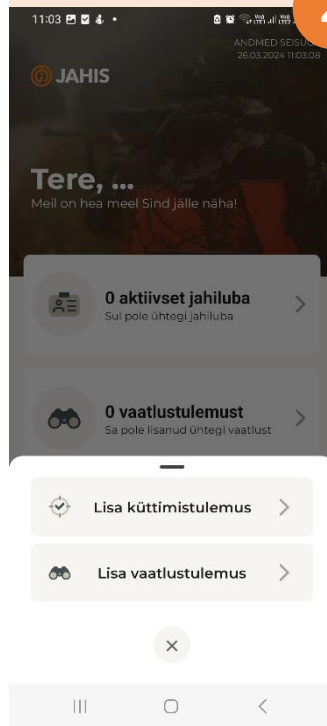


HANELISTE SEIREANDMETE SISESTAMINE JAHISE ÄPIS

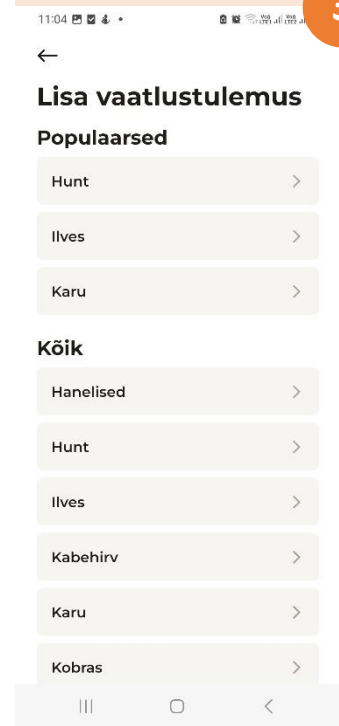
Vaatluse sisestamiseks tuleb avalehel vajutada „pluss“ ikoonile.



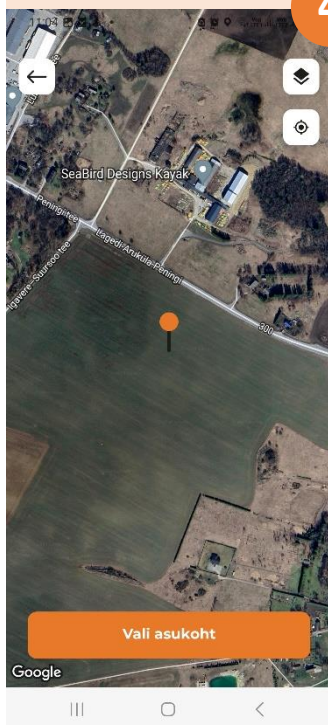
Seejärel tuleb valida „Lisa vaatlustulemus“.



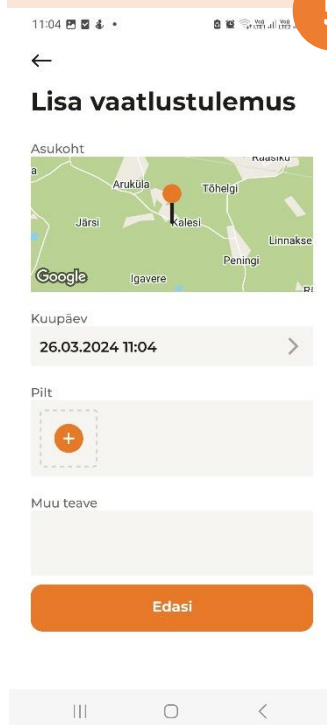
Haneliste vaatluse sisestamiseks tuleb valida „hanelised“.



Selles etapis tuleb määrata vaatluse asukoht.



Vaatluse juurde saab lisada foto ja lisainfo.



Viimases etapis saab määrata haneliste liigi ja hinnangulise arvu

